

MOO

WINDOW FURNISHINGS
by CHOICES FLOORING



Choices
Flooring

choicesflooring.com

NEW ZEALAND



Decorating from the floor up

With the latest in colour, design and texture, Choices Flooring's exclusive range of window furnishings are the perfect addition to your interior.

At Choices Flooring, our window furnishings are made to measure, offering a beautifully customised fit specifically for your home.

Their benefits make them a sound investment that will add value to your home. Window treatments don't just help control light and privacy, they can transform the look of a space and help you set a mood.



MOO 
WINDOW FURNISHINGS
by CHOICES FLOORING



contents

roller blinds	5
venetian blinds	7
vertical blinds	9
shutters	11
honeycell blinds	13
care & maintenance	14



ROLLER BLINDS

Affordable

Low maintenance

Motorisation options

Easy to clean

Sleek and
contemporary

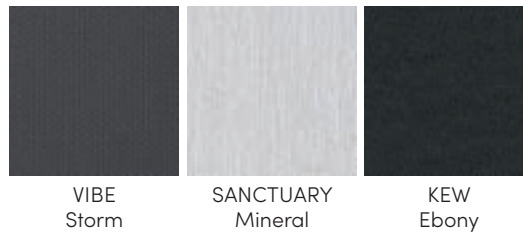
Block out and
sunscreen options

Roller blinds

Roller blinds are amongst the most popular and affordable window furnishings available - delivering a sophisticated, contemporary look that accents and complements any décor. Roller blinds are available in a range of sheer, translucent and blackout finishes.

They can also be used as a dual application, to provide a 24 hour solution to privacy and light control.

Popular colours



(over 100 colours available)

Accessories



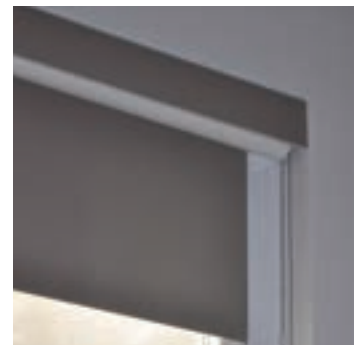
motorisation options



valances



bonded pelmets



box cassette
 (with side channel)
 and wire guides



VENETIAN BLINDS

Excellent light control
Affordable price point

Stylish and functional
Easy to clean

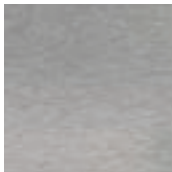
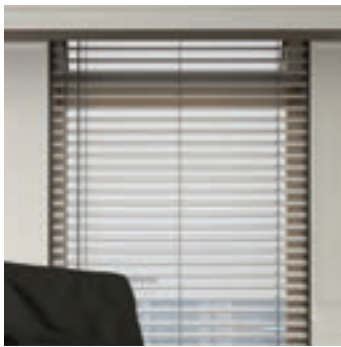
Motorisation options
Great alternative
to shutters

Venetian blinds

Venetian blinds allow excellent light control, ventilation and privacy at an affordable price point.

From the durability of aluminium to the style and functionality of timber, we're sure you will find the perfect window furnishing option for your home.

Available in



Aluminium

25mm can go between glass

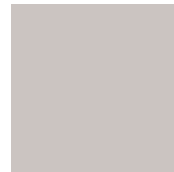
20% thicker than the industry standard

All cords are single, not joined for child safety



Purewood

A range of contemporary colours, rustic wood grains and sophisticated high gloss finishes are available



Visionwood

Ideal for high humidity areas - bathrooms and kitchens

Accessories



motorisation options



VERTICAL BLINDS

Affordable

Extremely versatile

Excellent light control

Easily cleaned

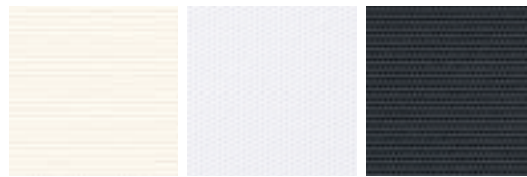
Ideal for full windows
and sliding doors

Vertical blinds

Vertical blinds assist in creating an illusion of increased height to any room. With an affordable price tag, ease of functionality and maintenance, vertical blinds are ideal for both residential and commercial spaces.

Privacy and light are easily controlled with chain or wand options to rotate vanes up to 180° when closed and rapidly open to stack neatly for maximum viewing capacity.

Popular colours



FOCUS
Blockout Chalk

VIBE
Pure

FOCUS
Blockout Ebony

(over 30 colours available)



SHUTTERS

Easy to clean
Low maintenance

Reduces power costs
Motorisation options

Excellent light
control and airflow

Shutters

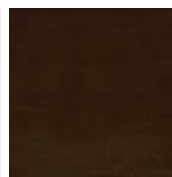
Adding a sense of space to any home, shutters provide total privacy from the outside world yet still allow for light and airflow through their adjustable louvres.

Shutters are the perfect option if you're seeking coverage for doors and windows or something to divide your space.

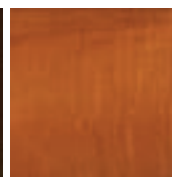
Popular colours



PVC
Ivory

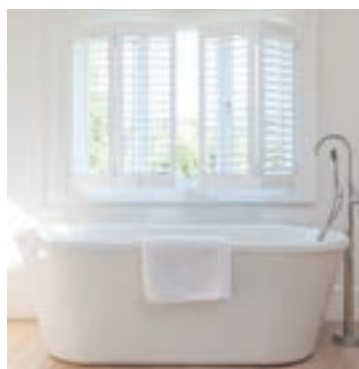


BASSWOOD
Walnut



BASSWOOD
Cherry

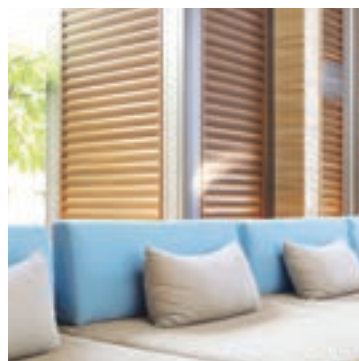
(over 20 colours available)



PVC shutters

Ideal for high humidity areas - bathrooms and kitchens

Allergy friendly



Basswood shutters

Three different louvre widths available



HONEYCELL BLINDS

Sleek and contemporary
Blockout and Light Filtering
options available

Different configuration
options including Standard/
Bottom up, Top Down/
Bottom Up and
Tension/Skylight

On-trend colours available
in both light filtering and
blockout

Honeycell blinds

Create a striking look with a combination of design and the exceptional structure of Honeycell fabrics.

The MOOD Honeycell is a cellular blind, available in both blockout and light filtering. The Honeycell traps air within each cell, creating an effective insulation barrier.

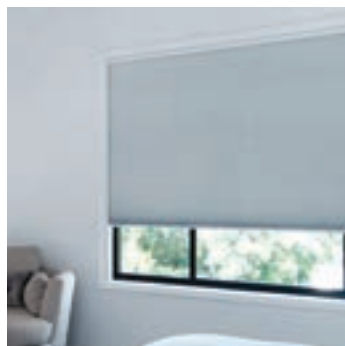
The metalised lining within the blockout cells provides superior insulation, keeping the home warmer in Winter and cooler in Summer. With no visible holes this also makes this blind an ideal option where complete room darkening is required, such as bedrooms and theatre rooms.

The neutral colour palette of the light filtering blind adds a lovely ambience to your décor while still allowing light, privacy and insulation for your home.

Accessories



ability to put into skylights



vertical & day/night shade



patio door



CARE & MAINTENANCE

A guide to cleaning and looking after
your window furnishings

Care & maintenance

Roller blinds

To clean roller blinds, start by pulling them down so they're fully extended. Then, use a vacuum with a brush attachment to remove any dust and debris on the blinds. Once you've gone over the blinds with the vacuum, depending on the fabric, you can then use a damp (not wet) sponge or dish towel to wipe them off with lukewarm soapy water (check instructions on the reverse of the fabric swatch).

Honeycell Blinds

Like any blinds, the honeycell style will eventually gather dust and general household debris over time. Using a feather duster or soft dry cloth is an easy way to remove dust particles. Alternatively, a hairdryer set on cold is a great way to blow out the cobwebs and get your honeycell blinds back to their best. A vacuum cleaner with dusting attachment (make sure you're using a low power setting) will do the trick, too.

You can also spot clean your honeycell blinds. Try to treat the fabric both carefully and gently whenever you're spot cleaning it. Use a damp plain-white cloth with a very mild detergent, and gently 'dab' at the affected area. Harsh rubbing will remove the stiffness and possibly even colour of the fabric, and can also distort its surface. Try to ensure that you don't crease the fabric throughout the cleaning process. Occasionally, insects may get trapped inside your blind cells. Again, grab a hairdryer set to cold (or similar), or vacuum cleaner, and you can easily blow out any bugs that may have perished.

Aluminium Venetians

To clean an Aluminium Venetian Blind, simply apply the same steps for the Visionwood Venetian Blind (see below). Aluminium Venetian Blinds can also be taken down out of their brackets and thoroughly cleaned in a bathtub. Simply fill a bathtub with clean water and clean each slat with a sponge. Ensure the blinds are rehung and left in the open position to allow them to dry completely before using again.

Visionwood Venetians

Start by tilting the Venetian Blind slats in the upwards position and grab either a feather duster or a dry cloth and run the cloth or duster across the slats. Repeat this process and tilt the slats into the downward position. Once you have dusted off the slats, fill up a bucket with fresh water and dampen a clean cloth. Again, tilt the slats into the upward position and working left to right, starting from the top, clean each slat individually. Repeat this process and tilt the slats into the downward position. Next, tilt the slats into the open position and again run the cloth along each individual slat. Remember to consistently rinse your sponge and change the water when required. Finally, leave the slats in the open position until completely dry to prevent the build-up of mould or mildew.

Care & maintenance

Purewood Venetians

As Timber (Purewood) Venetian Blinds are a natural product, they need to be taken care of to ensure the life of the blind can be prolonged.

Start by giving the Timber Venetian Blind a dust over. Tilt the slats up and then down, using a feather duster to give a light dusting. This is an easy cleaning technique that can be done weekly to prevent the build-up of dust. This will also help to make a deep clean of the blind easier. For a deeper clean, use the soft brush head on the vacuum and run it along the slats. Due to the nature of the Timber Venetian Blind, avoid getting the blind wet and do not use any harsh chemicals on the slats. If you do have any stubborn dirt or dust, use a damp (not wet) microfibre cloth to remove any build up on the slats.

TIP: Put your hand inside a sock and wrap your hand around each individual slat. Run your hand along each individual slat, cleaning both the back and the front of the slat at one time. It is an easy and great way to do a deep dusting for each slat.

Vertical blinds

You can clean fabric vertical blinds without removing the vanes. Lift away dust by sweeping down the fabric with the brush attachment of your vacuum while supporting the vane from behind with your hand. To remove stains, you can spot clean with a damp (not wet) microfibre cloth and warm, soapy water.

PVC Shutters

Internal PVC Shutters are easy to clean and maintain. Over time your shutters will collect dust. As shutters don't blow around in the breeze or move when handled, they can be simply wiped down like you would a piece of furniture.

A micro fibre 'anti static' cloth or glove is ideal. Otherwise a damp cloth to collect the dust with a quick wipe should be sufficient.

Basswood Shutters

Real timber shutters, painted or stained, should be kept dry at all times. If wet from a window left open. Dry off with a towel as soon as possible. Continued exposure to water or steam can damage or alter the timber. Do NOT use any kind of water or soap. Dust with a dry micro fibre cloth.

External Products – Awnings

Canvas, Acrylic & Mesh Care Instructions

for Componentry Retract awnings in strong winds and or heavy rain. Only pitch awnings when extended half way making sure the awning is level. Always clean hardware of awning to prevent corrosion. Spray joints and all working parts with an anti-corrosive, lubricant spray. For electronic awnings with a sun and wind sensor, always check that wind sensor is clear of all debris and able to rotate freely. Protect motors with a box or cassette.

Care Instructions for Fabric

Avoid rolling up the fabric when wet. Roll up your awning in windy or stormy weather. If your awning does get wet, roll out fully to dry as soon as possible. Do not allow dirt, leaf litter, bird droppings to remain on fabric. Hose the canvas on a hot dry day to remove any dust or grime. Occasionally extend the awning fully down to even out the material. Re-coat annually with a water repellent treatment. Some shrinkage over time is normal as canvas contains cotton. Avoid pools of water from lying on the fabric. Cleaning should be done by lightly sponging with warm water and a mild natural soap,

rinse thoroughly to remove soap. Do not scrub the fabric. Do not use soap powder, concentrated soaps, detergents or cleaning fluids. Remove dust by brushing the fabric with a soft bristle brush. An occasional hosing will remove any dust and ingrained dirt.

NEVER scrub at the fabric and never use soap, bleach, solvents or cleaning fluids as these may damage the coating on the fabric. Extensive cleaning of canvas over a period of time may affect the fabric's ability to repel water, resulting in the need to reproof with a mildew inhibited wax based agent. Store, pack or roll up the fabric only when the blind is dry as moisture and dirt can encourage mould growth regardless of the fabric's composition.

CAUTION: NEVER LEAVE AWNINGS DOWN IN STRONG WINDS Awnings are not designed to take strong winds as they are used for shade and for keeping your house cooler in summer.

For more information regarding the care & maintenance of your window furnishings, visit [choicesflooring.com](https://www.choicesflooring.com)

All product features and research included within this brochure have been provided by the manufacturer. Our goods come with guarantees that cannot be excluded under New Zealand Consumer Law. You are entitled to a replacement or refund for a major failure and compensation for any other reasonably foreseeable loss or damage. You're also entitled to have the goods repaired or replaced if goods fail to be acceptable quality and the failure does not amount to a major failure. Actual colour samples shown in this brochure may vary due to the printing process. View a true representation of the range at your local Choices Flooring store. All information is correct at the time of printing (April 2023).

JOIN OUR ONLINE COMMUNITY



choicesflooring.com