



*asthma friendly*

CHOICES

A U S T R A L I A





## WHAT IS SENSITIVE CHOICE?

Sensitive Choice® is a community service program created by the National Asthma Council Australia for all of us who want to breathe purer, cleaner, fresher air and reduce asthma and allergic reactions.

While the Sensitive Choice® program and the products featured within this brochure do not claim to offer cures or treatment for such conditions, we conscientiously strive to help cleanse and purify the personal environments in which we all live and breathe.

Choices Flooring is a community-conscious company and we are proud to display the blue butterfly on our Brease carpet range and Dunlop Comfort CHOICE underlay, so you can rest assured knowing you are making a healthy choice for your home.

For more information on the Sensitive Choice® program, visit [choicesflooring.com](http://choicesflooring.com) or [sensitivechoice.com](http://sensitivechoice.com)







# asthma friendly CHOICES



- 2 Before you Buy
- 4 Solution Dyed Nylon Care & Maintenance Guide
- 6 The Technology Behind Brease
- 8 Arhern
- 9 Bacuzzi
- 10 Calhoun
- 11 Evaro
- 12 Kinsella
- 13 Lancia
- 14 Martello
- 15 Nordling
- 16 Tesconi



- 19 Dunlop Comfort Choice
- 20 How It's Made
- 20 Features & Benefits
- 25 Guarantees & Warranties

BREASE TESCONI  
Colour Featured: Trojan

# BEFORE YOU BUY

Throughout this brochure you may notice a colour variation between the room and swatch images. Both are the best possible representation of that product within two different photographic environments. It is important to keep in mind that there are a number of variances in addition to lighting that may affect the way your carpet looks. This can include the pile direction, paint colour on walls, furniture and décor items that can alter the appearance of your carpet.

## HOW LIGHTING AFFECTS THE LOOK OF YOUR FLOOR

Flooring is one of the biggest surface areas in your home and a key design element to any interior. When selecting your carpet, colour plays just as much of an important role as price, style and quality.

It is important to take into consideration how your selected carpet may look once it is installed in your home as the lighting in the room will have a significant impact on the way the colour of the carpet is perceived.

For example, carpet that is laid in a room that receives little to no natural light will appear drastically different to a room that has a lot of natural light coming in. The carpet will also appear different as the light changes throughout the day and transitions from morning to night.

## THE EFFECTS OF ARTIFICIAL LIGHTING

Natural sunlight is not the only lighting that has an impact on the colour of your carpet; the type of light fixtures you have in the room will also play a part in how the carpet will look in your room.

Indirect lighting, such as a wall bracket aims light toward ceilings or walls, whereas a lampshade or floor lamp has a wider spread of light, therefore the light displayed will rebound against walls and floor.

For the best representation, we recommend going into your local Choices Flooring store and request to take a sample of your desired colour home. In addition, take a sample that is a shade darker so you can compare the two shades in both natural and artificial light at various times throughout the day to ensure you are happy with the true colour of the carpet within your room.





Wall colour and furniture can appear to change the tone of your carpet due to colour reflection.

The actual swatch generally appears most like the mid to dark sections of the room image.

Under natural light your carpet can appear drastically lighter.

For more information, visit **choicesflooring.com** or speak with your sales consultant at your local Choices Flooring store.

# SOLUTION DYED NYLON CARPET CARE & MAINTENANCE GUIDE

If you or your family suffer from asthma or allergies, a solution dyed nylon (SDN) carpet will certainly assist you in making your home a healthy one. However, regular maintenance is required to ensure you can enjoy its outstanding qualities for years to come.

## DRY VACUUM REGULARLY

As often as necessary, but at least once a week, especially in high traffic areas.

This will remove free soil particles and surface litter, and prevents soil becoming embedded in the carpet.

Pay particular attention to the areas around doorways and skirtings which are often the first place for insects and moths to reside. Every few months vacuum under infrequently moved furniture.

## PROMPTLY ATTEND TO SPILLS AND STAINS

Spills should be blotted up by dabbing, do not vigorously rub as this will spread the stain and may cause fuzzing of the area.

It is best to work from the outside of the stain towards the middle as this will avoid further spreading.

Most importantly, rinse the cleaned area with cold water as soon as possible.

## PROFESSIONALLY STEAM CLEAN

It is worth getting your carpet professionally steam cleaned by a reputable operator at least once a year, or as often as required.

This will remove entrapped soil particles and revive the appearance of your carpet.



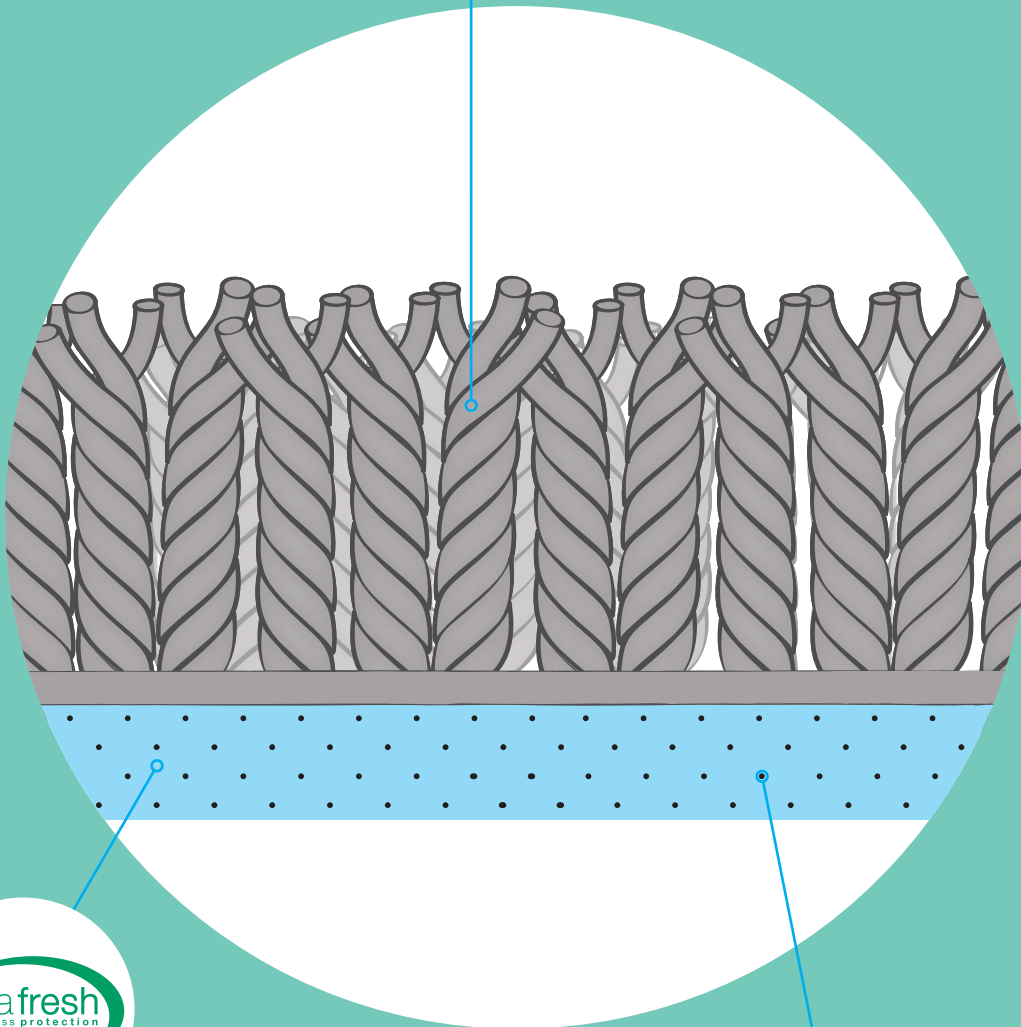


For more information regarding the care & maintenance  
of your carpet, visit [choicesflooring.com](https://www.choicesflooring.com)



## Active Care®

Active Care® is a self-renewing, odour destroying treatment within Brease carpet that chemically absorbs and decomposes gases from the source, reducing common odours and improving air quality.



## Ultra-Fresh

Scientific evidence has established that the presence of bacteria, mould, mildew and fungi in interior environments can be major contributors to health problems. Brease carpet addresses this by incorporating the proven antimicrobial, Ultra-Fresh into its fibres and underlay.

Ultra-Fresh is scientifically proven to help control dust mites and assist in the prevention of asthma and other allergies triggered by them. It also provides lasting hygienic freshness, effective odour protection and extends the life of Brease carpet.



## EasyBac+®

EasyBac+® is a reinforced backing applied to all Brease carpets that is made from fibres that prohibit mould or mildew growth. It also provides excellent insulation, comfort, and noise reduction.



# THE TECHNOLOGY BEHIND BREASE CARPETS

An innovation in carpet technology, Brease carpet has been especially developed to be asthma and allergy friendly.

Brease carpet has the added benefits of Ultra-Fresh and EasyBac+® to prevent the growth of bacteria, mould, mildew and fungi.

Thanks to its Active Care® treatment, Brease carpet also has self-renewing odour destroying properties that reduce common odours and improves air quality.

## KEY FEATURES



Exclusive to  
Choices  
Flooring



Allergy  
Friendly



Anti  
Slip



Asthma  
Friendly



Colour  
Fastness to  
Artificial Light



Durable



Easy  
Cleaning



Eco-Friendly



Family  
Friendly



Hard  
Wearing



Low  
Maintenance



Quiet  
Underfoot



Sensitive  
Choice



Sound  
Absorption



Stain  
Resistance



Underfloor  
Heating  
Suitability

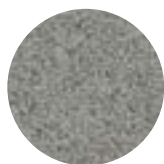


BREASE ARHERN  
Colour Featured: Railing

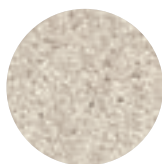
## ARHERN

Arhern features a wonderful twist design in the latest designer colours.

### CURRENT COLLECTION



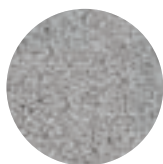
AMIME



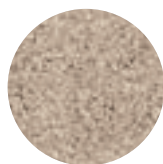
DIMITY



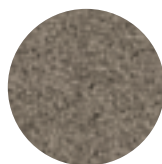
DORSET



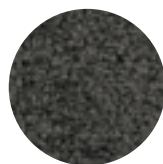
HARDWICK



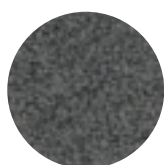
MANOR



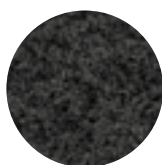
MATCHSTICK



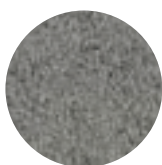
PAVILION



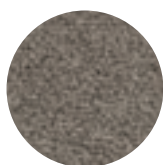
RAILING



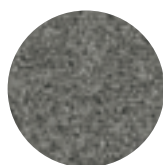
SALAN



SILVERGATE



TALLOW



TANNER



TRELLIS



VARD0

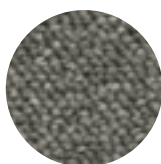


BREASE BACUZZI  
Colour Featured: Raglan

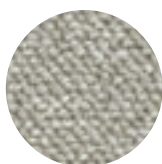
## BACUZZI

Bacuzzi has been designed for the modern home, featuring a unique blend of natural colours and a soft texture.

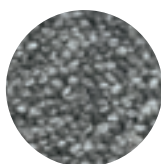
### CURRENT COLLECTION



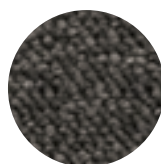
ASCOT



BOLTON



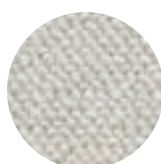
CIVIC



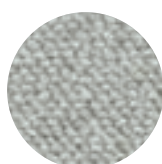
DARLY



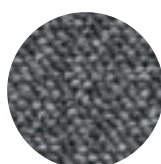
DAWSON



LARRITT



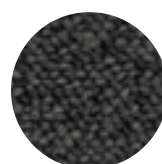
MERCY



PELLETT



RAGLAN



WALA



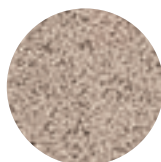


BREASE CALHOUN  
Colour Featured: Ridge

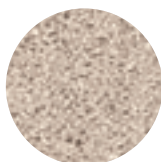
## CALHOUN

Soft and luxurious featuring the latest in colour trends, Calhoun will enhance any area of your home.

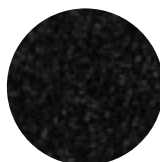
### CURRENT COLLECTION



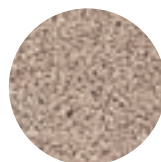
BRANTFORD



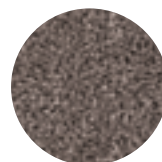
COASTER



DOWNPOUR



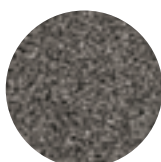
FOCUS



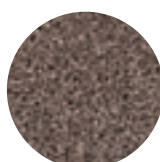
HAMILTON



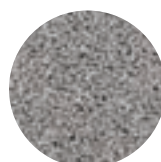
RIDGE



SONARA



VERBENA



WYNDANCE



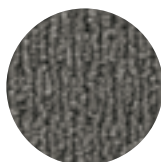


BREASE EVARO  
Colour Featured: Bentley

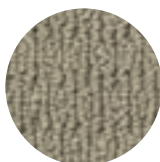
## EVARO

Evarto is an extremely durable carpet, yet is also soft to touch. Evarto has a wonderful textured appearance and contemporary design featuring the latest colour trends.

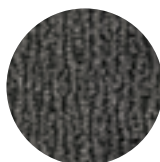
### CURRENT COLLECTION



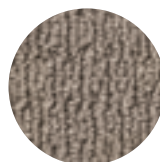
BENTLEY



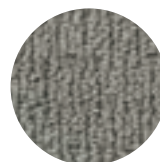
BINGHAM



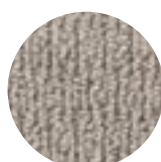
CONLIN



COSTNER



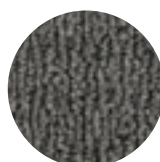
HAUSER



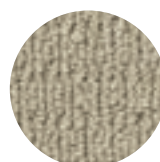
HUSTON



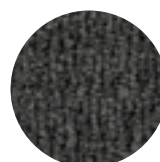
LUCAS



MERRILL



MONIZ



REILLY



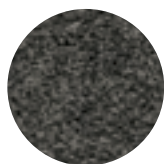


BREASE KINSELLA  
Colour Featured: Cosmic

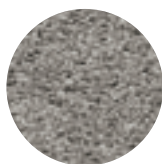
## KINSELLA

Ready for all life throws at it, Kinsella has been produced with the modern family in mind.

### CURRENT COLLECTION



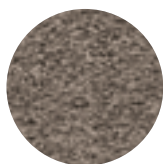
ARIA



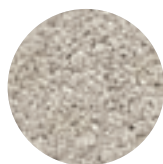
COSMIC



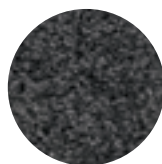
ELUSION



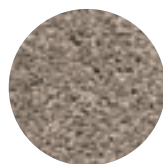
GABBLE



GYPSUM



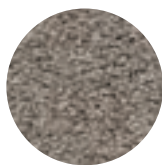
LAVA



LOTUS



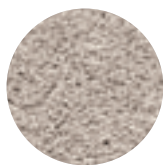
PHOENIX



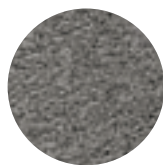
RADDISON



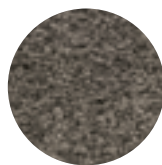
RAINSONG



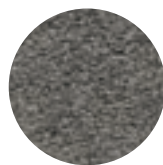
SANTOLINA



STARGAZER



SUBLIME



TUNDRA



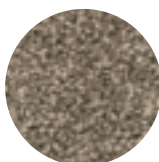


BREASE LANCIA  
Colour Featured: Sena

## LANCIA

Featuring the latest in fibre technology, Lancia is crafted with a subtle tonal effect is soft underfoot yet still offers exceptional on floor performance.

### CURRENT COLLECTION



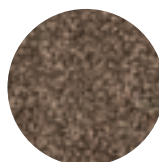
APACHE



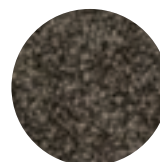
DALE



DORAN



GLADE



IVES



KIRBY



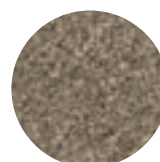
NORTON



ROBEY



SENA



YORK





BREASE MARTELLO  
Colour Featured: Elamo

## MARTELLO

Martello is a high quality carpet that you'll love to live with. Not only is it extremely soft but is perfect for high traffic areas thanks to its built-in durability.

### CURRENT COLLECTION



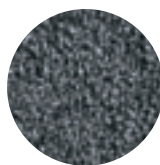
AIRLIE



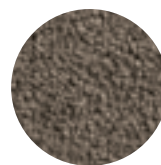
CHERLEY



CURZON



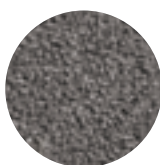
ELAMO



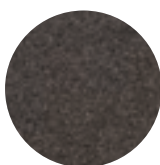
FANTAIL



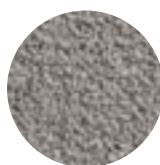
JOFFRE



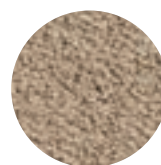
SILVERLEAF



TORVILLE



TURNER



VUE





BREASE NORDLING  
Colour Featured: Grove

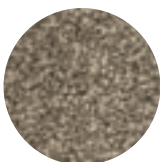
# NORDLING

Featuring the latest in yarn technology and colour trends, Nordling will enhance any area of your home.

## CURRENT COLLECTION



CARADON



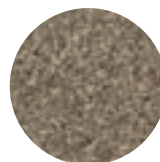
DANBY



ELK



GLEBE



GROVE



JACKSON



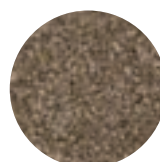
LODGE



NITON



RYDER



TEMPLE





BREASE TESCONI  
Colour Featured: Nordett

## TESCONI

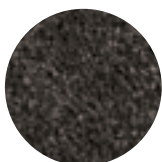
Tesconi is soft, stylish and sophisticated  
featuring the latest in designer colours.

BREASE TESCONI  
Colour Featured: Trojan

### CURRENT COLLECTION



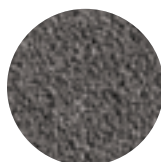
Alloy



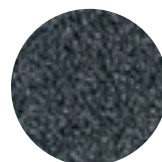
Burr



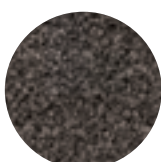
Comet



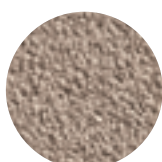
Gibbs



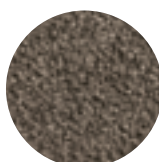
Harrop



Hopla



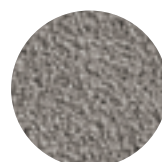
Kendall



Nordett



Trojan



Unsworth











# A QUALITY UNDERLAY WILL PROVIDE THE UTMOST COMFORT FOR YOU AND YOUR FAMILY

Dunlop Comfort CHOICE is a premium domestic carpet underlay range formulated to make carpet feel richer, thicker, softer and more luxurious.

Dunlop Comfort CHOICE makes a significant difference to the durability of your carpet. In fact, research has shown that Comfort CHOICE underlay can extend the life of your carpet by up to 50% and is guaranteed for the life of your carpet\*.

Manufactured from 90% recycled materials, Dunlop Comfort CHOICE is 100% recyclable. The Recycle by Dunlop program ensures that all used underlay is returned to the Dunlop Flooring manufacturing site to be cleaned, sorted and re-used in the production of new underlay.

\*Australian Wool Testing Authority (AWTA) Hexapod Wear Tests indicate improved carpet appearance retention of 50% when incorporated with carpet cushion.

## HOW IT'S MADE

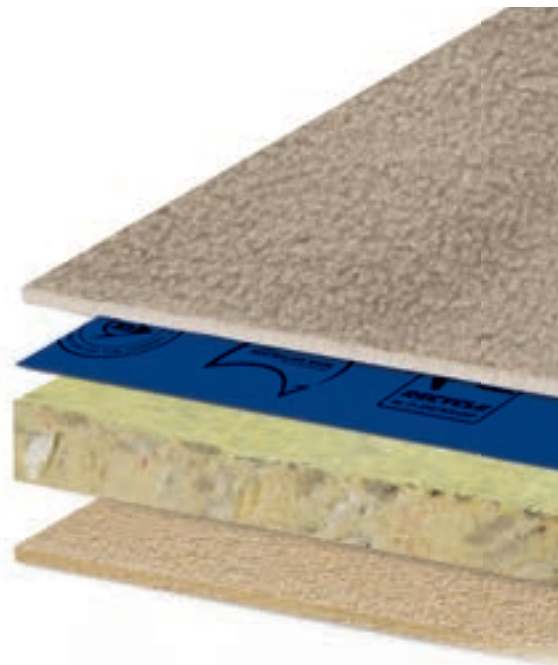


Thickness: 9mm  
 Acoustic Performance: 27dB  
 Thermal Insulation: R0.21

Density Meter: DELUXE (90kg/m<sup>3</sup>)

The minimum requirement as set by the NCC is 62 dB (the lower the dB result for the flooring assembly, the better the acoustic performance).

Thermal resistance is a measure of a material's ability to resist heat transfer. The higher the R-value, the better heat transfer resistance of that material.



## FEATURES &amp; BENEFITS



Makes carpet feel richer, thicker and more luxurious



Extends the life of your carpet by absorbing impact



Improves carpet appearance and retention



Acts as a thermal insulator



Improves acoustics by reducing noise transfer



Suitable for all floor types including heated slabs up to 40°C



Environmentally friendly, 100% recyclable



Meets Australian Standards AS 4288-2003 for soft underlays



All Dunlop Comfort CHOICE underlay is Green Label accredited by the Carpet and Rug Institute in the USA, ensuring that it meets strict criteria on VOC emissions for superior indoor air quality for your entire family. After all, it's what you can't see that makes the difference.





Thanks to its innovative technology, Comfort CHOICE underlay can help over seven million asthma and allergy sufferers to breathe easy in their homes.

Accredited by the National Asthma Council Australia's Sensitive Choice® program, Comfort CHOICE carries the blue butterfly symbol which recognises products that support asthma and allergy care.



To support you in creating a healthy home, Comfort CHOICE underlay is treated with Dunlop Fresh Living, an antimicrobial that protects against dust mites, damaging bacteria, mould and mildew – significant triggers for asthma, hay fever and eczema.

Dunlop Fresh Living promotes healthier living and a healthier home environment.



The butterfly symbol indicates that an individual's exposure to asthma or allergy triggers may be reduced but this does not mean that an individual's asthma or allergy symptoms will necessarily diminish. Products should be used only for their intended purpose and strictly in accordance with the manufacturer's instructions at all times. The sponsorship fees from the relationship with this manufacturer enable the NAC to continue to lead the attack against asthma. For more information visit **[sensitivechoice.com](https://sensitivechoice.com)**



# AUSTRALIAN MADE DUNLOP COMFORT CHOICE UNDERLAY IS GUARANTEED FOR THE LIFE OF YOUR CARPET\*

We all recognise the benefits of buying Australian made products. Not only does it create jobs, boost the economy and improve our overall standard of living, it also gives us well-made products that have been specifically designed by Australians for Australians.

The Australian Made logo is reputedly the most recognised and trusted product symbol of Australia and helps consumers identify truly Australian made products quickly and easily. Dunlop Comfort CHOICE proudly features this logo.



For more information ask your Choices Flooring consultant or visit [choicesflooring.com](http://choicesflooring.com)



Visit the National Asthma Council of Australia's website for more details on asthma: [nationalasthma.org.au](http://nationalasthma.org.au) or email: [nac@nationalasthma.org.au](mailto:nac@nationalasthma.org.au)

For more information on Dunlop Comfort CHOICE or any other Dunlop Flooring products call 1800 622 293 or visit [dunlopflooring.com.au](http://dunlopflooring.com.au)







# IF YOUR BREASE CARPET FAILS TO PERFORM...

Your selected BREASE carpet is covered by one or more warranties as stated in the warranty information. For more information on the applicable warranties or guarantees on your selected carpet, please check with your local Choices Flooring consultant, or for more information visit the warranty section of the product on **[www.choicesflooring.com](http://www.choicesflooring.com)**



VIEW WARRANTY  
BROCHURE ONLINE

\*Warranties and guarantees are provided by the manufacturer and are in addition to other rights and remedies of the consumer under a law in relation to the goods. Our goods come with guarantees that cannot be excluded under the Australian Consumer Law. You are entitled to a replacement or refund for a major failure and compensation for any other reasonably foreseeable loss or damage. You're also entitled to have the goods repaired or replaced if goods fail to be acceptable quality and the failure does not amount to a major failure. Actual colour samples shown in this brochure may vary due to the printing process. View a true representation of the range at your local Choices Flooring store. All information is correct at the time of printing (April 2023).

## PILE REVERSAL / WATERMARKING

Watermarking, shading, pooling and pile reversal all refer to various types of pile distortion. If you are considering a carpet for your home, please be aware that shade variations may occur. Caused by relatively slight changes in pile from foot traffic, vacuuming, general use and the sides of fibers reflect more light than their tips, pile laying away from the observer appears lighter, while pile laying toward the observer appears darker. Areas that appear dark when viewed from one direction appear light when viewed from the opposite direction, and vice versa. These changes in pile lay are temporary and usually can be removed easily by vacuuming or brushing the pile.

CF\_0333



[choicesflooring.com](http://choicesflooring.com)

JOIN OUR ONLINE COMMUNITY

